





**EGR Building Products Division**  
**40 Machinery St, Darra**  
**Brisbane, Queensland 4076**  
**Australia**

**Phone: +617 3718 1100 Fax: +617 3217 0295**  
**Email: [info@stylelite.net](mailto:info@stylelite.net)**

**© Copyright 2015 / Patent Pending**  
**Oakmoore Pty Ltd trading as EGR.**

1. EGR expressly disclaims any representations or warranties of any kind, whether express or implied, as to the accuracy, currency, completeness and/or the merchantability or fitness for a particular purpose of any information contained in or provided via this documentation and/or any service or product described or promoted in this document. 2. It is the customer's responsibility to thoroughly examine StyleLite by a qualified person, to determine whether it is suitable for the application it was purchased for. 3. The receiver of our products is fully responsible to check and to take into account possible third party's patent rights, as well as the existing laws in the country of installation prior to installing our product. 4. No liability may be derived from these images or statements nor from our free technical advice. 5. EGR reserves the right to change, add or remove colours or product without notice. 6. StyleLite and EGR are registered trademarks. 7. Images and colours should be used as a guide only.



**Thank you for your interest in the StyleLite® product range.**

This document provides a comprehensive set of technical specifications for StyleLite, as well as answering common questions about machining, fabrication, installation and care.

For further enquiries visit **[www.stylelite.net](http://www.stylelite.net)** or contact your nearest StyleLite distributor.

## **Contents**

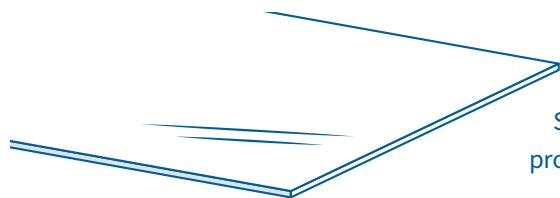
Product Information .....	<b>2</b>
Things to Consider .....	<b>3</b>
Location .....	<b>3</b>
Storage and Handling .....	<b>4</b>
Machining Guide .....	<b>4</b>
Hinge Recommendations .....	<b>5</b>
Edge Finishing .....	<b>5</b>
Cleaning Do's and Don'ts .....	<b>6</b>
Scratch Repair .....	<b>6</b>
Environmental Statement .....	<b>7</b>
StyleLite Multi-Purpose Board (MPB) Warranty .....	<b>8</b>
StyleLite Multi-Purpose Board Technical Data .....	<b>10</b>



# Product Information

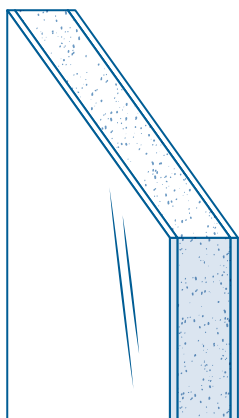
## Introduction

StyleLite Multi-Purpose Boards feature StyleLite Sheet laminated front and back to a quality substrate. StyleLite Sheet is available in a **High Gloss finish**



### High Gloss

Smooth, ultra gloss finish that provides a mirror-like appearance. Highly reflective.

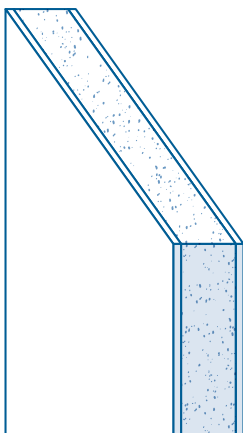


## StyleLite Multi-Purpose Boards

Using an advanced new substrate material, StyleLite Multi-Purpose Boards are a highly water resistant product, suitable for covered patios and alfresco areas, wet areas, floodprone locations, and marine cabinetry. Multi-Purpose Boards are 20% lighter than MDF, resistant to warpage, and feature a 7 Year Warranty. Ideal for floodprone and wet areas.

Substrate	Finished Panel Size	Region	Weight	Finish
Wood Infused PVC	2400 × 1200 × 18mm	Global	10.7kg/m <sup>2</sup>	High Gloss

Optional White Textured Backing Sheet also available.



## StyleLite Multi-Purpose Carcass

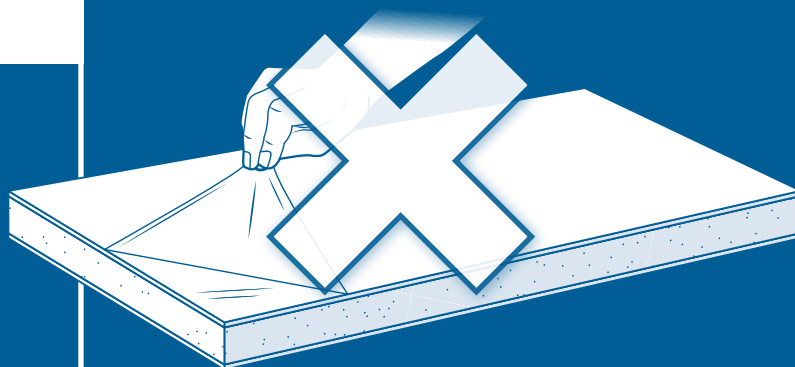
StyleLite Multi-Purpose Carcass is a highly water resistant product used for cabinetry fitouts. The product is suitable for covered patios and alfresco areas, wet areas, floodprone locations, and marine cabinetry. Multi-Purpose Carcass feature a textured white sheet laminated front and back to a Wood Infused PVC substrate.

Substrate	Finished Panel Size	Region	Weight	Finish
Wood Infused PVC	2400 × 1200 × 17mm	Global	11.2kg/m <sup>2</sup>	Textured White Sheet



## Warning

**DO NOT REMOVE  
PROTECTIVE FILM UNTIL  
FINAL INSTALLATION IS  
COMPLETE**



## Things to Consider

- **Assembly:** Adequate fixing should be provided at no greater than 400mm [15"] centres.
- **Handles:** Do not over tighten handles as it may cause an unsightly dip in the high gloss surface.
- **Protective Film:** StyleLite achieves maximum hardness a few days after the removal of the protective film. This process can be accelerated with a light polish.
- **Metallic Colours:** Metallic colours are directional. Take note of the arrows on the protective film. All metallic panels should be assembled/installed with the arrows in one direction to avoid apparent shade or colour variation.
- **Heat:** EGR Multi-Purpose Boards will deform when exposed to temperatures above 75°C.
- **Shelf Loading:** The maximum unsupported shelf span of Multi-Purpose Boards is 750mm.
- **Edging: Multi-Purpose Boards and carcass boards should be edged around every perimeter.**
- **Clearance:** Minimum ground clearance should be maintained at 50mm for any application of Multi-Purpose Boards.
- **Ovens:** We recommend an air gap of 6mm [¼"] adjacent to ovens and other heat sources.
- **Gas Appliances:** When installing EGR Multi-Purpose Boards in the vicinity of gas burners or gas barbecues, ensure that a minimum clearance of 200mm is maintained between the gas appliance and the EGR Multi-Purpose Boards in accordance with AS/NZS 5601:2010 Gas Installation Code. For clearance requirements around a gas or electrical cooking appliance and a combustible surface, always adhere to the appliance manufacturer's installation requirements as certified under AS 4557.

## Location

EGR Multi-Purpose Boards cannot be used for structural applications, including exterior wall cladding, building facades, balustrades, railings or swimming pool surrounds.

EGR Multi-Purpose Boards must not be used at a location where surfaces may come in contact with corrosive substances eg. Chlorine, Acid or Pesticides.

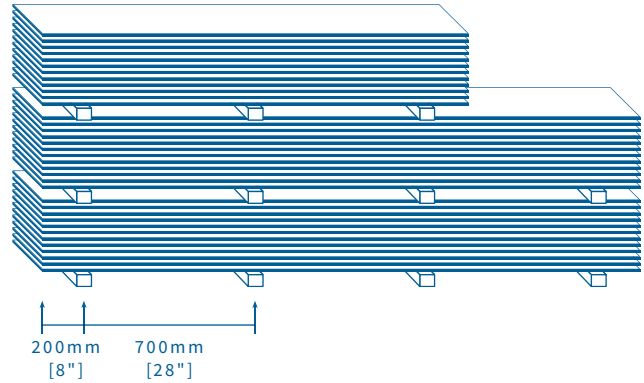
EGR Multi-Purpose Boards must avoid exposure to direct sunlight, with no more than 4hrs of direct sunlight exposure within a 24 hour period. A solid, opaque ceiling should provide full coverage of all product surfaces with an additional 1 metre overhang surrounding all edges.

# Storage and Handling

**StyleLite finished panels can be stored horizontally or vertically but should be well supported at all times.**

- Do not store panels outside.
- Do not store or transport panels in direct sunlight.
- Avoid sliding the panels on the outer face surface.
- It is recommended that the panels are stored horizontally and supported at no more than 700mm [28"] from centres and 200mm [8"] from the ends to prevent the risk of warpage. All bearers should be of equal thickness and quality.
- Panels should be stored in well-ventilated and dry conditions.
- Cover boards should be placed on the top and bottom of stacked panels to provide protection and reduce the effects of environmental changes.

**CORRECT STORAGE METHOD**

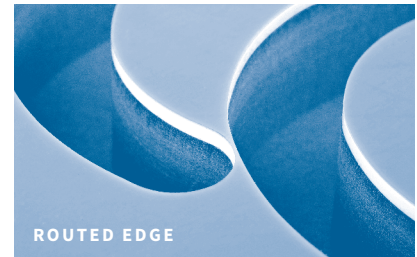


## Machining Guide

### Routering

Router cutting is the preferred method for cutting EGR Multi-Purpose Boards.

- Router cut using a feed rate of 10 to 15 metres per minute with a spindle speed of 20,000rpm.
- Solid carbide router cutters will deliver the best finish.
- Twin flute compression cutters are ideal as they minimise the chance of chipping at the edge and eliminate any feathering of the masking material on either side of the sheet.



**ROUTED EDGE**



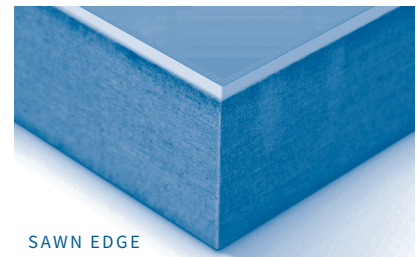
**COMPRESSION ROUTER CUTTER**

### Saw Cutting

- Use very sharp carbide tipped blades with 3 to 5 teeth per centimetre.
- We recommend using a 300mm diameter blade at a speed of 3200rpm for best results. Results may vary depending on your equipment.

### Band saw

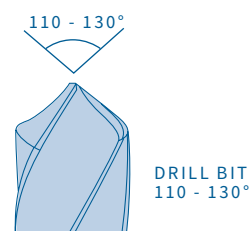
Band saws can be used to cut curves however a secondary finishing operation will be required.



**SAWN EDGE**

### Drilling

- Drilling can be done using high speed steel or carbide tipped drills.
- Best results will be achieved using drills with a tip angle of 110 to 130°.
- Use slow to medium speeds to avoid overheating the material.



**DRILL BIT  
110 - 130°**

# Hinge Recommendations

When using EGR Multi-Purpose Boards for door installations, ensure the appropriate amount of hinges are used to deliver a professional result. Hinges suitable for covered outdoor conditions recommended.

Door Height		Number of Hinges
Up to 800mm	[Up to 31"]	2 hinges
800 to 1300mm	[31" to 51"]	3 hinges
1300 to 1800mm	[51" to 70"]	4 hinges
1800 to 2100mm	[51" to 82"]	5 hinges
2100 to 2440mm	[82" to 97"]	6 hinges

- Always test hinge boring tools to ensure a clean cut is achieved.
- Best results will be achieved by drilling or boring through a thin MDF sacrificial block.
- Only bore the required amount of your hinge hardware.

## Edge Finishing

Colour matched Edge Band rolls are available for StyleLite High Gloss Panel products.

EGR has partnered with a variety of global edge finishing specialists to create an extensive range. All StyleLite compatible Edge Band is of premium quality and offer high resistance to heat, abrasion, impact and colour fade.

StyleLite Edge Band is available in two options – **Standard** and **Fusion**.

### Standard Edge Band

Colour-matched Standard Edge Band is pre-primed ready for installation using EVA hot melt or PUR edge banding machinery.

Panel Type	Dimensions
Standard Edge Band for High Gloss Panels	23mm × 1mm (100m roll)

### Fusion Edge Band

Fusion Edge Band allows a seamless colour matched functional layer to bond to the board using hot air or laser equipped machinery. Fusion Edge Band is available in selected colours only.

Panel Type	Dimensions
Fusion Edge Band for High Gloss Panels	23mm × 1.2mm (100m roll)

#### Edge Band Technical Notes

Best results will be achieved using the following practices:

- CNC machining the panel edge or using an edge bander with pre-milling function.
- Leave protective film on panel in place at all times.
- Set trimming and scrapers to flush with surface of the StyleLite face, do not leave a lip.
- If there is glue overrun on the face, it can be removed using a microfibre cloth dampened with mineral turpentine, use sparingly and avoid excessive rubbing.
- If manual scraping or finishing is required, take care to avoid gouging the face of the panel.

#### EVA Hot Melt Adhesive

- Use white adhesive on white panels and transparent on dark panels.
- Using natural honey colour adhesive will not deliver the best visual result.

#### PUR Polyurethane Adhesive

- Suitable for all colours and will deliver a highly moisture resistant panel.



#### Warning

Do not use PVC edge banding, solvent based adhesives or aggressive solvent based cleaners at any time.

# Cleaning Do's and Don'ts

StyleLite products can be cleaned simply using a wet microfibre cloth or chamois with non-abrasive soap.

Do Use	Don't Use
✓ Clean wet microfibre cloth	✗ Paper towel
✓ Clean wet chamois	✗ Dry wipe at any time
✓ Novus No. 1 polish used often	✗ Brushes, scourers or scrapers
✓ Non abrasive soap and detergent	✗ Abrasive cleaners
✓ Warm water	✗ Thinners or Methylated Spirits
	✗ High pressure water
	✗ Solvent based chemicals

## Scratch Repair

The StyleLite surface becomes more scratch resistant over the first few days after the removal of the protective film.

This process can be accelerated by lightly polishing the StyleLite surface immediately after the masking film is removed using Novus® No. 1 or Plexus® plastic polishes with a clean microfibre cloth.

 <b>Please Note</b>	The repair advice below applies only to StyleLite High Gloss products.
--------------------------------------------------------------------------------------------------------	------------------------------------------------------------------------

## General Cleaning

Apply Novus® No. 1 Plastic Polish, Plexus® Plastic Polish or warm soapy water and wipe using a clean microfibre, soft cloth or damp chamois.

## Removing Marks and Light Scratches

Apply Novus® No. 2 or a good quality liquid polish (e.g. 3M™ Finesse-It™ II, Kitten® Polishing Wax) and using a damp, clean microfibre or soft cloth, polish in a circular pattern. Then remove polish using General Cleaning procedure above.

## Removing Heavier Scratches

Apply Novus® No. 3 or a good quality fine compound polish (e.g. 3M™ Perfect-It™ III) and using a damp, clean microfibre or soft cloth, polish in back and forth motion at right angles to visible scratches. Then use Removing Marks and Light Scratches procedure, then General Cleaning procedure above.

Ensure all polish residues are removed completely from the StyleLite surface. Low speed electric buffing can also be used to repair marks and scratches.



# Environmental Statement

**StyleLite is a co-extruded, semi-rigid thermoplastic polymer sheet, which is intended as a lamination material suitable for bonding to a wide variety of substrates including E Zero MDF.**

StyleLite consists of an ABS (acrylonitrile butadiene styrene) coloured layer, which is permanently fused with a clear ultra high gloss Acrylic (Poly Methyl Methacrylate) top layer. StyleLite polymer sheet is an inert material and does not release any emissions to the environment during manufacture or in use. StyleLite is hygienic and does not promote bacterial growth or transmission.

All the colour pigments used in StyleLite sheet do not contain heavy metals such as lead or cadmium.

StyleLite offers significant environmental advantages compared with other high gloss finishes. StyleLite manufacture produces no VOCs unlike two pack spray paint, and StyleLite can be recycled.

StyleLite recommended lamination adhesive systems include water based EVAs and PUR reactive hot melts. Neither system emits any volatiles during the lamination process or during the life of the finished board products.

StyleLite polymer sheet can be treated as ABS for recycling purposes and falls under the Styrene group of polymers. StyleLite can be removed from the substrate by passive immersion in water. StyleLite sheet can then be recycled using mechanical means by grinding and pelletising for reuse in a multitude of extruded or injection moulded products.

The StyleLite sheet material recycling process only consumes around 15% of the original energy consumption required to manufacture the initial sheet material.

StyleLite can be cleaned and maintained using warm soapy water, and does not require the use of harsh or volatile chemicals. StyleLite can be refinished in situ many times and will remain functional for many years.

StyleLite is wholly manufactured under the EGR Environmental Management System, which has been independently accredited to ISO 14001.



# StyleLite® Multi-Purpose Board (MPB) Warranty

1/2

**StyleLite Multi-Purpose Boards are designed and manufactured for decorative finish vertical surface applications only; to be installed indoors or under solid opaque covered outdoor areas. StyleLite Multi-Purpose is warranted for a period of 7 years from the date of sale of the Product by EGR to the original purchaser. EGR warrants the Product against faulty materials and processing subject to the terms, conditions and exclusions contained within this warranty document.**

Should a valid warranty claim be made, EGR will provide a replacement board and or a refund based on 100% of the original purchase price for the first 2 years and then a reducing value of the original purchase price of 10% per year after the first 2 years.

EGR warrants that the StyleLite Multi-Purpose when installed and used according the EGR recommendations will be:

- compliant with the StyleLite Multi-Purpose Boards specification for visible defects
- permanently bonded under normal indoor and solid opaque covered outdoor conditions
- free of colour change from the original colour supplied beyond a Delta E of > 3 measured by reflection using a calibrated spectrophotometer
- flatness when correctly installed < 3.0 mm per 1000mm in any direction
- of a gloss level above 85% measured at 60 degrees

In the event that a valid warranty claim is made to EGR's satisfaction, then EGR will, at its option, either repair the Product at EGR's premises or on site or provide a replacement Product in a manner that EGR considers reasonable. If requested, EGR will compensate the purchaser to a reasonable labour charge, necessary for the repair or replacement of a StyleLite panel.

EGR will not be liable for any other consequential loss or damage whatsoever and however arising out of or in connection with the supply, performance or removal of the Product, including (but not limited to) any indirect or consequential loss including, without limitation, loss of profit, loss of revenue, loss of contract, loss of goodwill or increased cost of workings, even if due to the negligence of EGR or any of its approved

distributors, employees or agents.

This warranty does not extend to fair wear and tear, delamination, warpage or surface damage of the Product, which in EGR's opinion directly or indirectly arise from or are due to:

- a) Defects** are either insubstantial or insignificant;
- b) Physical abuse**, misuse, accidents, improper maintenance, normal 'wear and tear', scratches, scuffs, burns, stains, wipe marks on darker colour surfaces; or
- c) Variation in colour**, pattern, shade of material against the sample material, other panels of the same description, display/s and/or printed illustrations; or
- d) Exposure to direct sunlight** should be avoided with no more than 4hrs of direct sunlight exposure within a 24 hour period; or
- e) Inaccurate level of overhead coverage.** Solid, opaque ceilings should provide full coverage of all Product surfaces with an additional 1 metre overhang surrounding all edges; or
- f) Excessive water damage**, including damage from steam, high pressure hose, long term immersion >72hrs ; or
- g) Product installation adjacent to pool edge.** Product should not be installed within 3 metres of an edge of a swimming pool; or
- h) Insufficient distance from ground.** Multi-Purpose must not be installed within 50mm of the ground surface; or
- i) Heat damage**, due to incorrect installation or use of the Product adjacent to ovens, hotplates, BBQs, open flames or other high heat sources, including deformation, cracking, discolouration and scorching; or
- j) Heavy weight or impact**, placing heavy objects on the Product; applying substantial weight to the Product, including by standing, sitting or lying on the Product; or applying excessive impact to or mishandling the Product, including the impact caused by objects scraped along, thrown or dropped on to the Product's surface; or
- k) Chemical damage**, exposing the Product to acidic or corrosive materials, cosmetics and chemicals such

# StyleLite® Multi-Purpose Board (MPB) Warranty

2/2

as chlorine, dyes, solvents, bleach, inks, acetone, denture cleaner and photo developing fluid; or

- l) Using inappropriate household cleaning products,** such as, abrasive powder and cream cleansers; or
- m) Failure to clean or maintain as recommended** and outlined in the Product's care guide; or
- n) Structural design, installation or movement** affecting where the Product has been installed causing twisting, warping, bowing, cupping or shrinkage of the Product; or
- o) Incorrect fabrication and installation** as outlined in the Product's Installation and Specifications guide, specifying maximum panel sizes, hinge and edging requirements; or
- p) Inappropriate use,** including use of the Product on horizontal surfaces or unprotected outdoor areas;

For a warranty claim to be validated the affected board may be required to be returned to EGR for evaluation.

EGR reserves the right to undertake independent investigations into the cause of any warranty claim.

Warranty claims shall only be considered if the following conditions have been met:

- 1)** It can be proven that the board has been used according to EGR recommendations for interior or solid opaque covered areas.
- 2)** EGR been made aware of the fault within seven days of receipt / inspection.
- 3)** The invoice from the supplier of the board can be produced. The invoice should show the name and address of the customer, the purchase date, the complete product description and the total quantity of the purchased board.

This warranty does not cover any other products used in conjunction to or installed with StyleLite Multi-Purpose Boards.

This warranty only applies to the original purchaser and is non transferable.

This warranty document and other statements contained in this document or other documents given to you do not exclude, restrict or modify the application of any term implied into this warranty by statute, provided that (to the extent any statutory provision permits EGR

to limit its liability for a breach of an implied condition or warranty), EGR's liability for such breach is limited to the payment of the cost of replacing the Product or acquiring an equivalent Product or repairing the Product.

The obligations of EGR under this warranty are limited to those set out and this warranty is expressly instead of all other warranties, express or implied, including any implied warranty of merchantability or fitness for a particular purpose and notwithstanding any course of dealing between the parties or custom and usage in the trade to the contrary.

This warranty becomes valid only when EGR has been paid in full for all products used.

This warranty applies only to Products sold by EGR or any of its approved Distributors. "EGR" means

*Oakmoore Pty Ltd (ABN 13 056 159 570) for Products sold in Australia.*

Rev B – 15/10/15

# StyleLite® Multi-Purpose Board

## Technical Data

1/2

### Technical Properties

Properties	Test Method	Value
Density of substrate	N/A	600kg/m <sup>3</sup>
Board Size	N/A	2400 x 1200 x 18mm
Weight per Panel	N/A	30.75kg
Finish	N/A	Double sided High Gloss StyleLite Sheet
Construction	N/A	Premium PUR laminated with wood fibre filled PVC foam board
Weight	N/A	10.68kg/m <sup>2</sup>
Nominal Thickness	N/A	18mm – FACES: StyleLite 1.0mm 18mm – CORE: WPC board 16mm
Surface Hardness	Pencil hardness	3H – 4H
ERICHSEN Hardness	DIN EN 438-2	0.6N (24 hours after peeling film)
Heat Distortion Temperature	ASTM D648	85°C
Service Temperature	Continuous	70°C
Bond Strength	AS/NZS 4266.28	100N (25N min)
Stain Resistance	AS/NZS 4266.25	No effect
Steam Resistance	AS/NZS 4266.23	No change after 30 min
Cracking Resistance	AS/NZS 4266.24	No effect
Dry Heat Resistance	AS/NZS 4266.26	No Loss of gloss or colour change
UV Resistance	N/A	Designed for use in covered areas. Able to withstand a maximum of 4 hours direct sunlight exposure per day, with delta E change on colour below 2 over the warranty period.
Water Absorption	N/A	Zero water absorption / dimension change / weight increase after 72 hours of water immersion when fully edge banded
Vermin resistance	N/A	Vermens will not attack given its plastic structure
Gloss	Measured at 60°	> 90%

### Fire Performance Properties

AS/NZS 3837 (Cone Calorimeter) Test Results.

Group	Value
BCA Group Classification	Group 4
Average Heat Release Rate	195.9kW/m <sup>2</sup>
Average Specific Extinction Area	1379.5m <sup>2</sup> /kg

# StyleLite® Multi-Purpose Board

## Technical Data

2/2

### Supply Specification

3 Layer Rigid Pre Finished Panel.

Thickness	Thickness Tolerances	Length	Length Tolerances	Width	Width Tolerances
18mm	±0.5mm	2400mm	-0mm / + 8mm	1200mm	-0mm / 5mm

### Environment

Product is fully recyclable by mechanical means.

### Material Traceability

- Full compliance with ISO 9001.
- Face side printed with batch number.



ISO 9001



# StyleLite®

